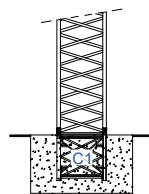
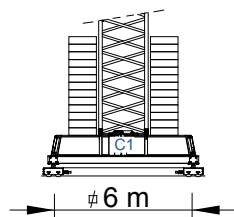
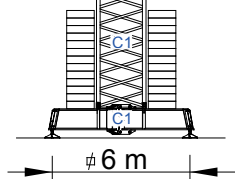
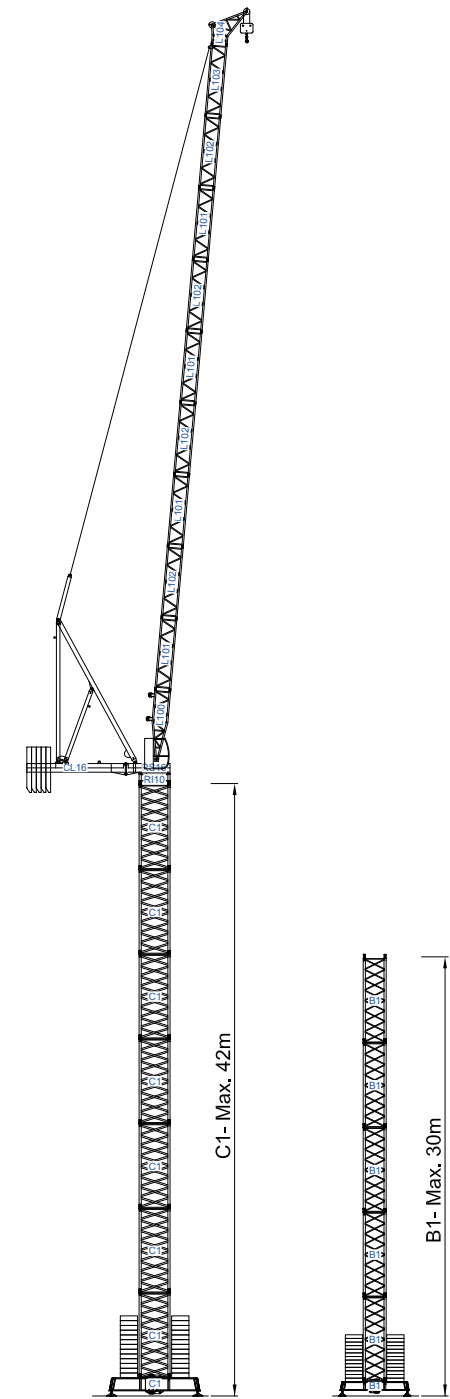


Cargas.Loads.Lasten.Charges.Cargas.Carichi.Yükler. ГРУЗОПОДЪЕМНОСТЬ

| | | K _{st} / м | Jib Length (m) | | | | | | | | |
|-----|--|---------------------|----------------|-------|-------|------|------|------|------|------|------|
| | | | 10 | 15 | 20 | 25 | 30 | 35 | 40 | 45 | 50 |
| 50m | L100+L101+L102+L101+L102 +L101+L102+L101+L102+L103+L104 | ☐ | 6000 | 6000 | 6000 | 6000 | 5400 | 4300 | 3500 | 2900 | 2500 |
| | | ☐ | 12000 | 12000 | 8300 | 6400 | 5200 | 4100 | 3300 | 2700 | 2200 |
| 45m | L100+L101+L102+L101+L102 +L101+L102+L101+L103+L104 | ☐ | 6000 | 6000 | 6000 | 6000 | 5900 | 4900 | 4100 | 3500 | |
| | | ☐ | 12000 | 12000 | 9000 | 7000 | 5700 | 4700 | 3900 | 3300 | |
| 40m | L100+L101+L102+L101+L102 +L101+L102+L103+L104 | ☐ | 6000 | 6000 | 6000 | 6000 | 6000 | 5700 | 4600 | | |
| | | ☐ | 12000 | 12000 | 10000 | 8000 | 6500 | 5500 | 4600 | | |
| 35m | L100+L101+L102+L101+L102 +L101+L103+L104 | ☐ | 6000 | 6000 | 6000 | 6000 | 6000 | 6000 | | | |
| | | ☐ | 12000 | 12000 | 10800 | 8800 | 7100 | 5900 | | | |
| 30m | L100+L101+L102+L101+L102 +L103+L104 | ☐ | 6000 | 6000 | 6000 | 6000 | 6000 | | | | |
| | | ☐ | 12000 | 12000 | 12000 | 9800 | 7800 | | | | |



SGT 5025LF new model

Elementos . Parts . Teile . Éléments . Elementos . Paççalar . ЭЛЕМЕНТЫ

| | | A (mm) | B (mm) | C (mm) | kg | Code | |
|--------------|--|--------|--------|--------|-----------------|-----------|-----------|
| L100 | | 5181 | 1112 | 1518 | 1524 | 530 50 25 | |
| L101 | | 5112 | 1112 | 1173 | 4x1030 4120 | | |
| L102 | | 5112 | 1112 | 1173 | 4x1036 4144 | | |
| L103 | | 5112 | 1112 | 1173 | 1116 | | |
| L104 | | 2698 | 1112 | 2745 | 928 | | |
| RS16 R110 | | 3344 | 2761 | 1863 | 6950 | | |
| CL16 | | 6968 | 2065 | 1655 | 5040 | | |
| T1 | | 11373 | 1841 | 570 | 1663 | | |
| T2 | | 10015 | 1831 | 438 | 1261 | | |
| CP3 | | 1160 | 165 | 3140 | 2x1000 2000 | | 704 10 00 |
| CP2 | | 1160 | 330 | 3140 | 9x2000 18000 | | 704 20 00 |
| TOTAL | | | | | 46746 | | |
| C1 | | 6130 | 2180 | 2180 | 2200 | | 509 06 00 |
| C1 | | 3195 | 2180 | 2180 | 1200 | | 508 12 03 |
| C1 | | 3195 | 2250 | 2250 | 1360 | 509 06 03 | |
| C1 | | 2280 | 2150 | 2150 | 850 | 509 06 02 | |
| C1 | | 8725 | 800 | 1370 | 4600 | 609 00 02 | |
| | | 4200 | 380 | 1370 | 2x1700 3400 | | |
| TOTAL | | | | | 8000 | | |

