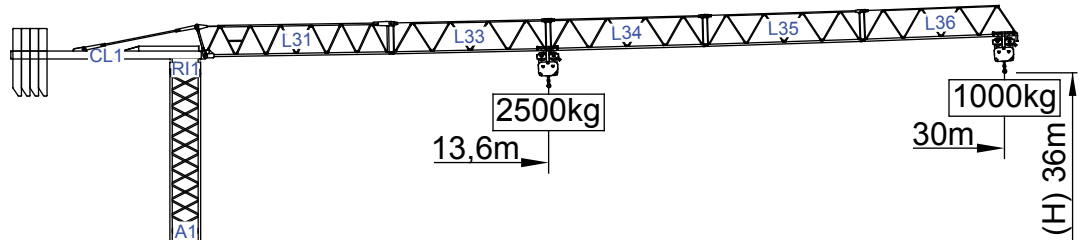


33m - 800kg

24m - 1.300kg

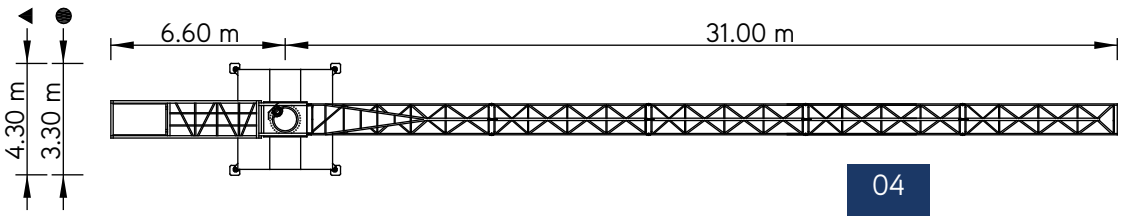
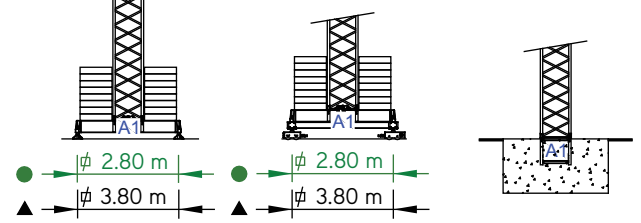
18m - 1.600kg

12m - 2.500kg



Cargas.Loads.Lasten.Charges.Cargas.Carichi.Yükler.ГРУЗОПОДЪЕМНОСТЬ






Icon	Jib Section	Kg/m M. КГ 2500	m	Capacity				
				12	18	24	30	33
	33m L31+L32+L33 L34+L35+L36	12,6 m		2500	1670	1190	900	800
	30m L31+L33+L34+L35+L36	13,6 m		2500	1830	1310	1000	
	24m L31+L33+L34+L36	13,5 m		2500	1810	1300		
	18m L31+L33+L36	12,1 m		2500	1600			
	12m L31+L36	12,0 m		2500				

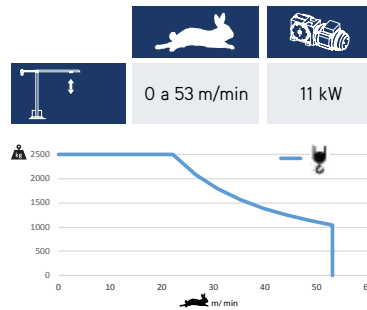
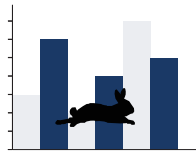


SGT 3010TL

30m - 1.000kg 2.500kg

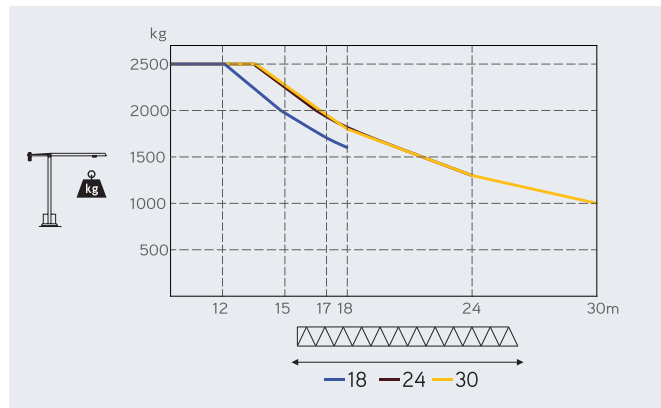
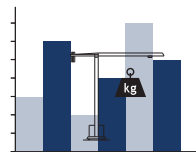
Características . Characteristics . Eigenschaften
Caractéristiques . Caratteristiche . Caratteristiche
Özellikler . ХАРАКТЕРИСТИКИ

	
	0 a 1 r.p.m. 3 daN.m
	0 a 50 m/min 1,5 kW
	15 m/min 2x2 kW

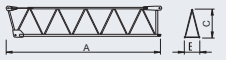




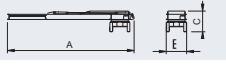
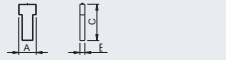




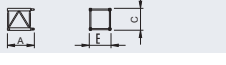

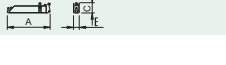




	20 kVA 400 V +- 5% (50/60 Hz)
---	----------------------------------

Velocidade de elevação . Hoisting speed . Hubgeschwindigkeit . Vitesse d'élevation .
Velocidad de elevación . Velocità di sollevamento . Kaldırma hızı (m/min) .
Скорость подъема (м/мин)



Elementos . Parts . Teile . Éléments . Elementos . Parçalar . ЭЛЕМЕНТЫ

		A (mm)	B (mm)	C (mm)	kg	Code
L31		7470	800	1650	1560	503 30 10
L33		6055	760	1210	350	
L34		6040	760	1200	275	
L35		6030	760	1190	250	
L36		5900	760	1400	240	
CL1 RI1		7380	1200	1530	2450	
CP1		1160	320	2530	4x1500 6000	704 15 00
TOTAL					10935	
A1		11985	1180	1180	1700	503 12 00
A1		6050	1180	1180	890	503 06 00
A1		3120	1180	1180	500	503 06 01
A1		3120	1385	1385	560	503 06 03
A1		1170	1160	1160	210	503 06 02
A1		4410	400	620	410	603 00 11
A1		2015	230	620	2x250 500	
TOTAL					910	
A1		5500	400	620	520	603 00 11
A1		2710	230	620	2x300 600	
TOTAL					1120	